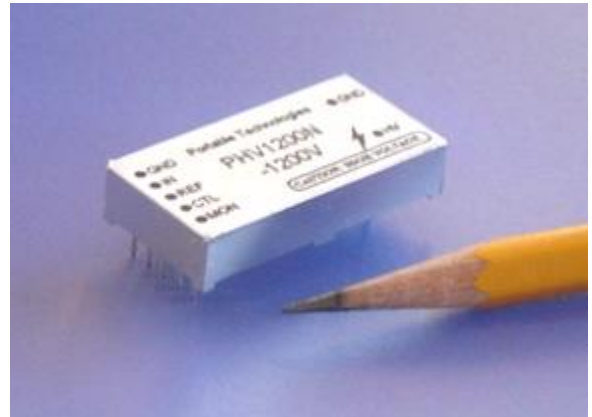


Low-Power Low-Noise Regulated High-Voltage Supply

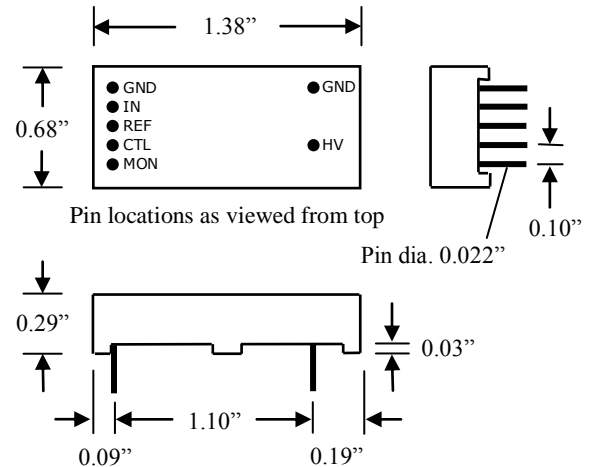
Features:

- Low power: < 3 mA quiescent current
- Wide input voltage range: +5 to +12 V
- Low noise: < 100 μ V p-p ripple
- Low EMI - no magnetic components
- Small size: 1.38" \times 0.68" \times 0.29"
- Voltage-controlled output
- Built-in reference and output voltage monitor



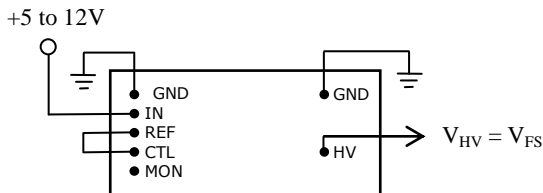
Part number	Full-scale output voltage (V_{FS})	Max. output current
PHV1200P	+1200 V	2 μ A
PHV1200N	-1200 V	2 μ A
PHV2000P	+2000 V	1 μ A
PHV2000N	-2000 V	1 μ A

Pin	Function
GND	Ground (connected to case)
IN	Input (+5 to +12 V)
REF	Reference voltage output (+4.096V)
CTL	Control voltage input (V_{CTL}), 0 to 4.096V
MON	Voltage monitor output (V_{MON}) = $ V_{HV} / 1000$
HV	High-voltage output (V_{HV}) = $V_{FS} V_{CTL} / 4.096$ V

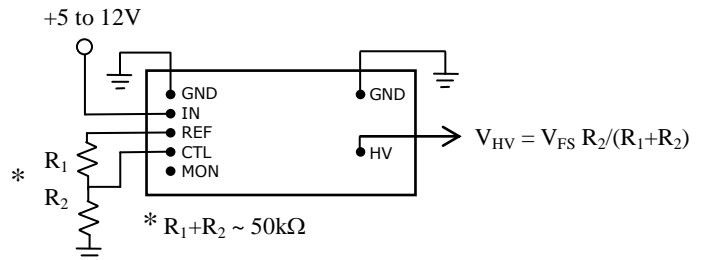


Operation:

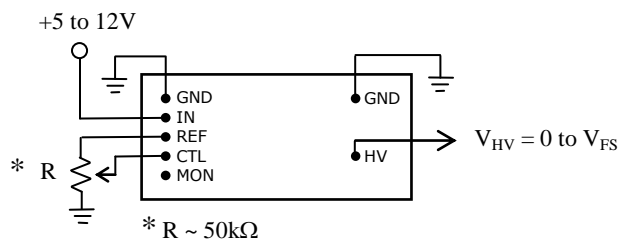
Fixed output (full-scale voltage)



Fixed output (reduced voltage)



Variable output



Voltage-controlled output

